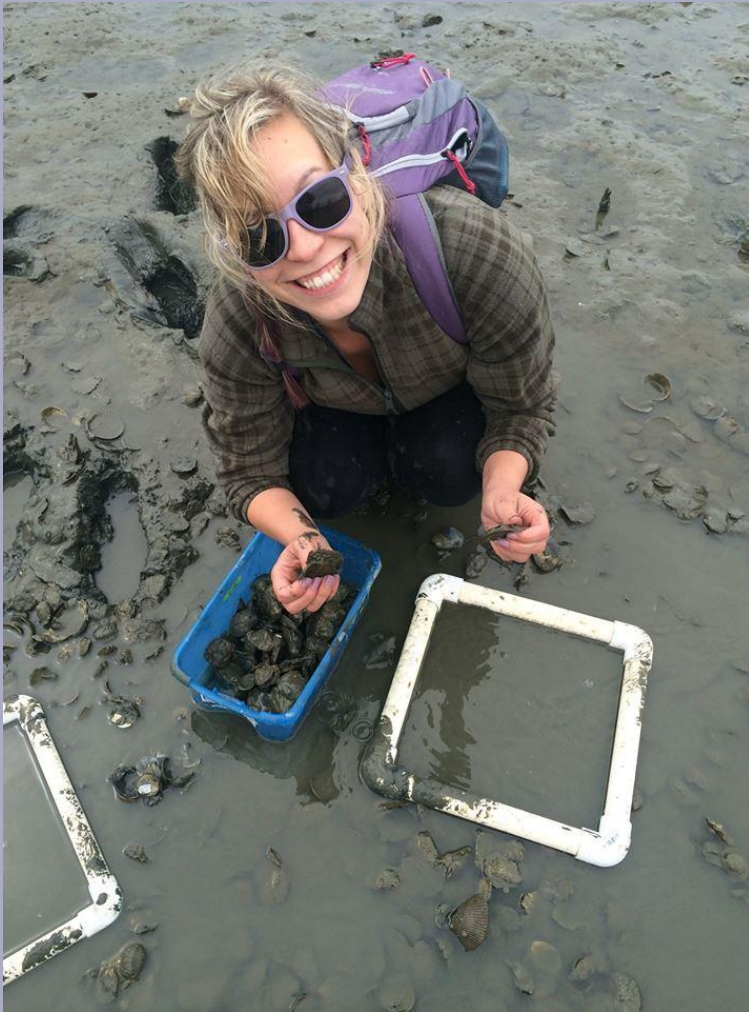


WATER IS LIFE:

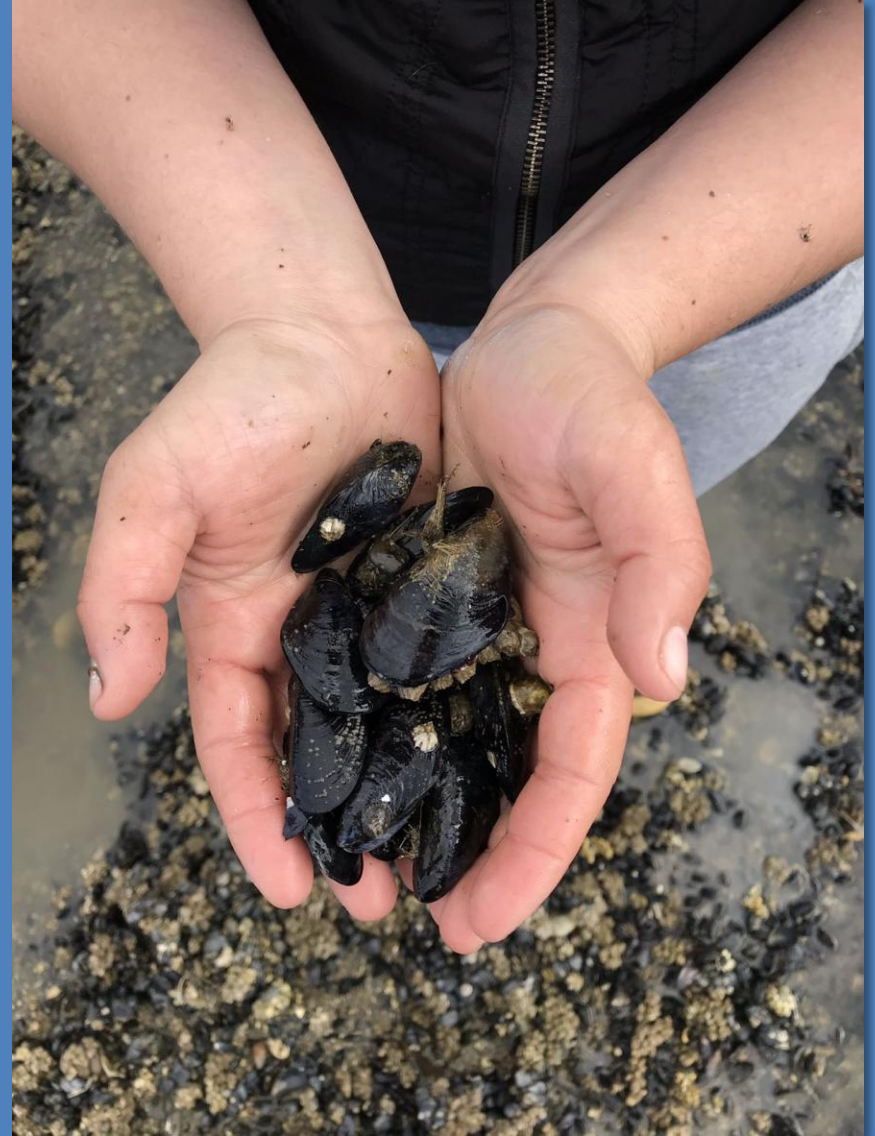
Potential impacts of climate
change to Lummi

Lummi Natural Resources
Harvest Management Division
April 9th 2019
Megan Hintz – Shellfish Biologist

Megan Hintz – Shellfish Biologist



Taylor Solomon– Shellfish Technician



Climate change





Climate change impacts



Changes: Rivers & Streams



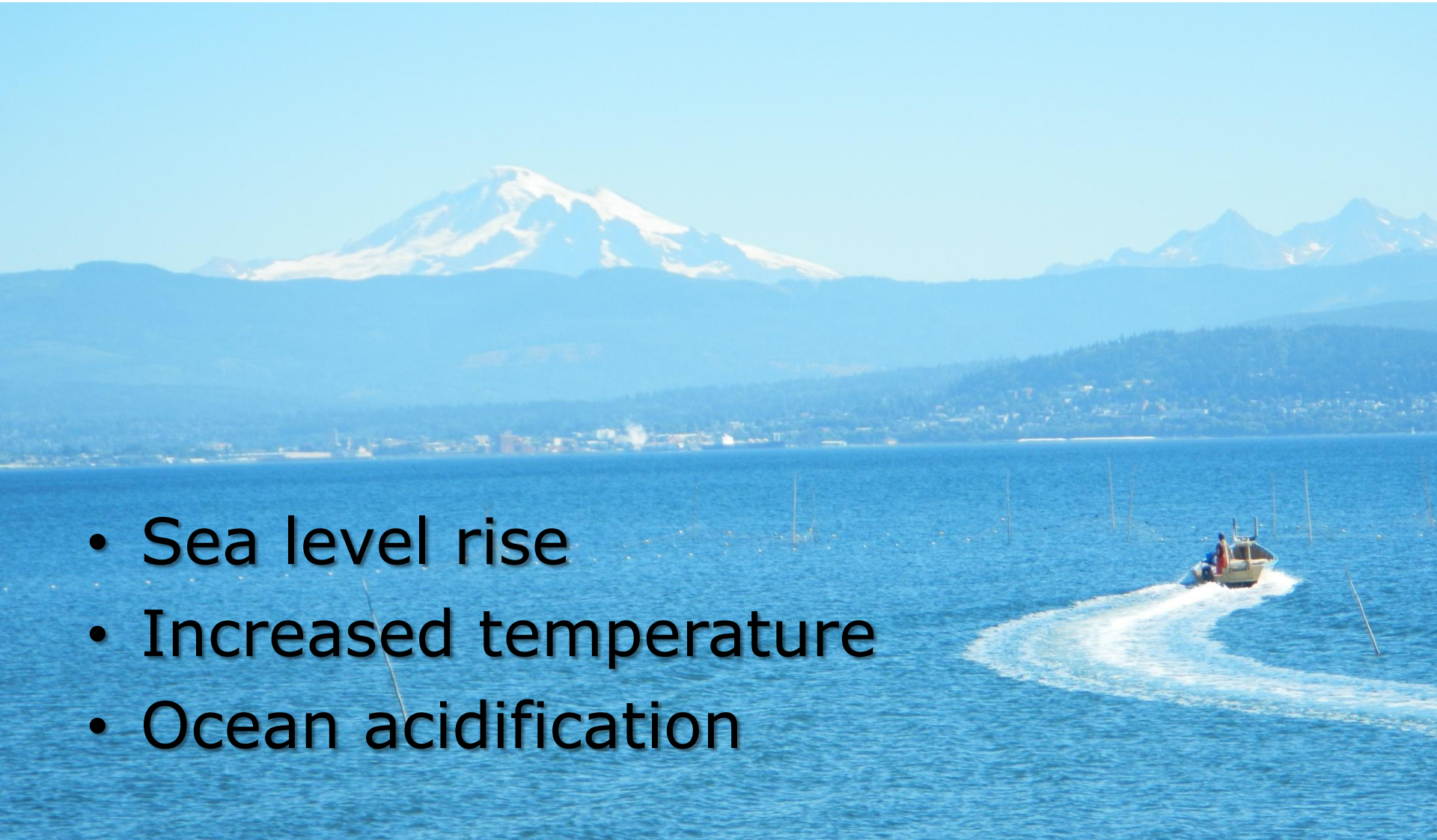
Impacts: Rivers & Streams

Increased flooding
Decreased salmon
survival



Changes: Ocean & Tidelands

- Sea level rise
- Increased temperature
- Ocean acidification



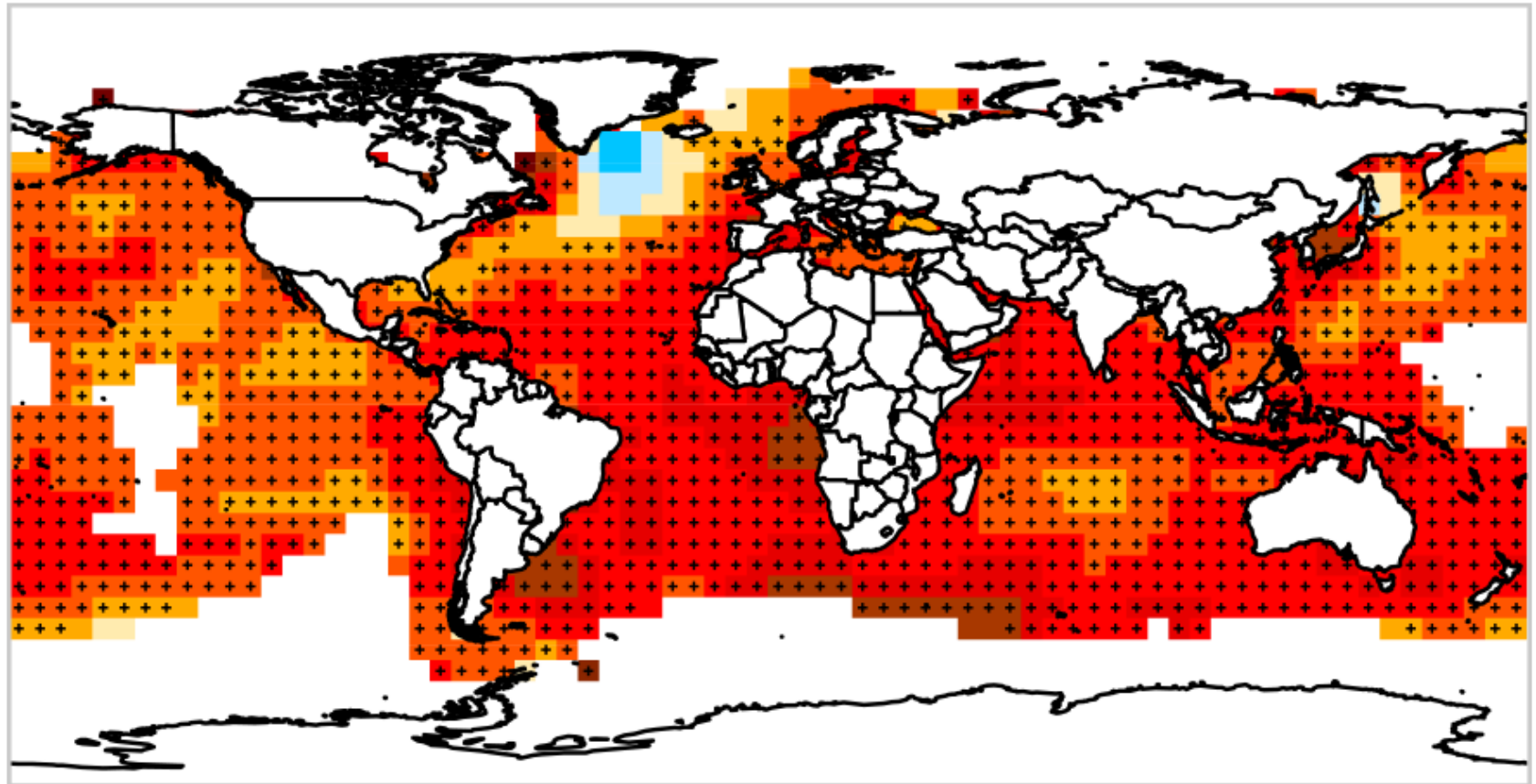
Changes: Sea level rise



Coastal erosion
& flooding

Changes: Increased temperature

Change in Sea Surface Temperature, 1901–2015

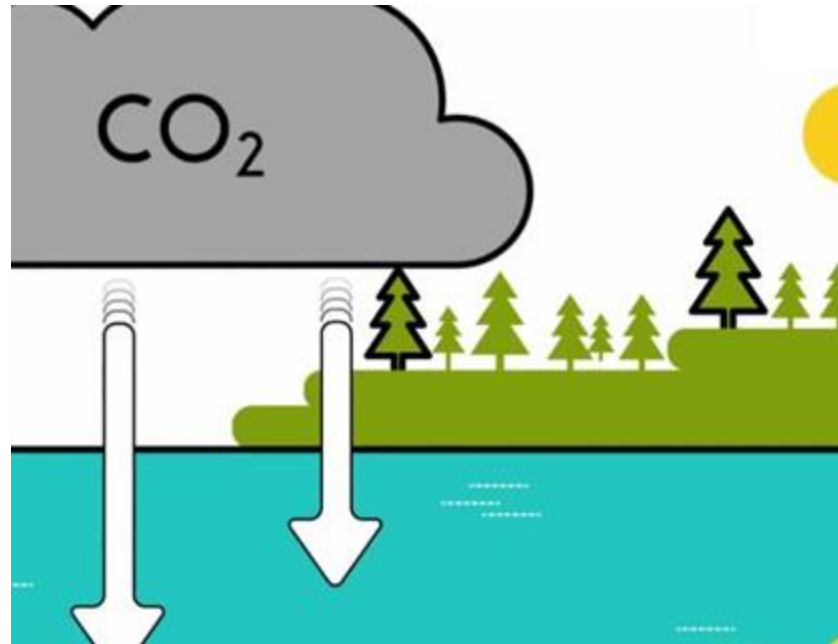


Change in sea surface temperature (°F):



Insufficient
data

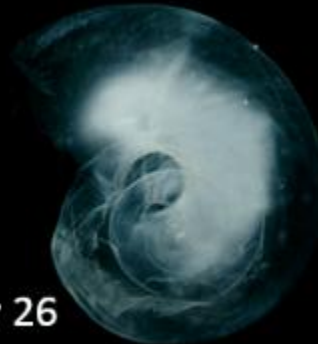
Changes: Ocean Acidification



Day 1



Day 11



Day 26



Day 45

Impacts: Ocean



Changes: Tidelands

Sea level rise: could lead to a loss of intertidal habitat

Ocean acidification: makes it more difficult for animals to form shells

Extreme weather events could cause mortality

Impacts: Shellfish



Harmful Algae Blooms (HABs)



Not all hope is lost



<https://www.bellinghamherald.com/news/local/article83002092.html>

WE ARE ALL RELATED HERE

